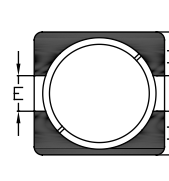
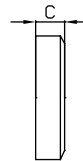
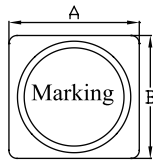
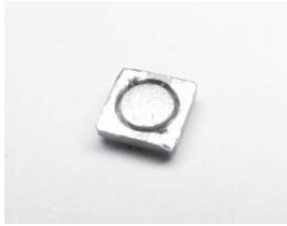


### HSDI6822 TYPE

#### TYPE

#### DIMENSION

#### HSDI6822



A:  $6.8 \pm 3.0$   
B:  $6.8 \pm 3.0$   
C:  $2.3 \pm 0.2$   
D: 2.3 REF  
E: 2.2 REF

#### SPECIFICATION

Item	Inductance ( $\mu\text{H}$ )	Tolerance (%)	Isat max (A)	DCR max (m $\Omega$ )	SRF typ. (MHz)
HSDI6822					
HSDI68221R0N	1.0	$\pm 30$	4.60	14	96
HSDI68221R5N	1.5	$\pm 30$	4.00	18	75
HSDI68222R2N	2.2	$\pm 30$	2.70	24	62
HSDI68223R3N	3.3	$\pm 30$	2.50	32	48
HSDI68225R0N	5.0	$\pm 30$	2.00	46	50
HSDI68226R2N	6.2	$\pm 30$	1.80	58	40
HSDI68227R5N	7.5	$\pm 30$	1.60	60	37
HSDI6822100N	10	$\pm 30$	1.40	70	35
HSDI6822120N	12	$\pm 30$	1.20	80	30
HSDI6822150N	15	$\pm 30$	1.10	95	23
HSDI6822180N	18	$\pm 30$	1.00	100	24
HSDI6822220N	22	$\pm 30$	1.00	120	20
HSDI6822330N	33	$\pm 30$	0.78	200	17
HSDI6822470N	47	$\pm 30$	0.62	280	14
HSDI6822680N	68	$\pm 30$	0.50	360	11
HSDI6822101N	100	$\pm 30$	0.47	480	9
HSDI6822151N	150	$\pm 30$	0.32	580	7
HSDI6822102N	1000	$\pm 30$	0.13	5000	3

N:  $\pm 30\%$

\* Hong can design any part to your requirements with different inductance.

\* All parameters as this content presented are subject to final specifications both sides confirmed.